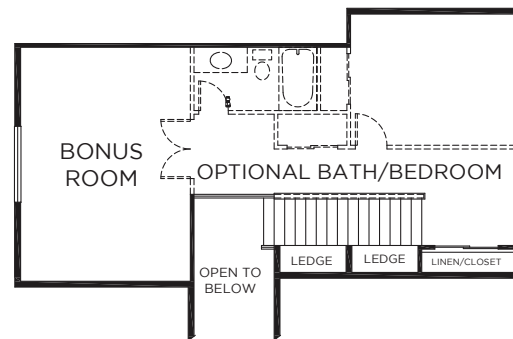
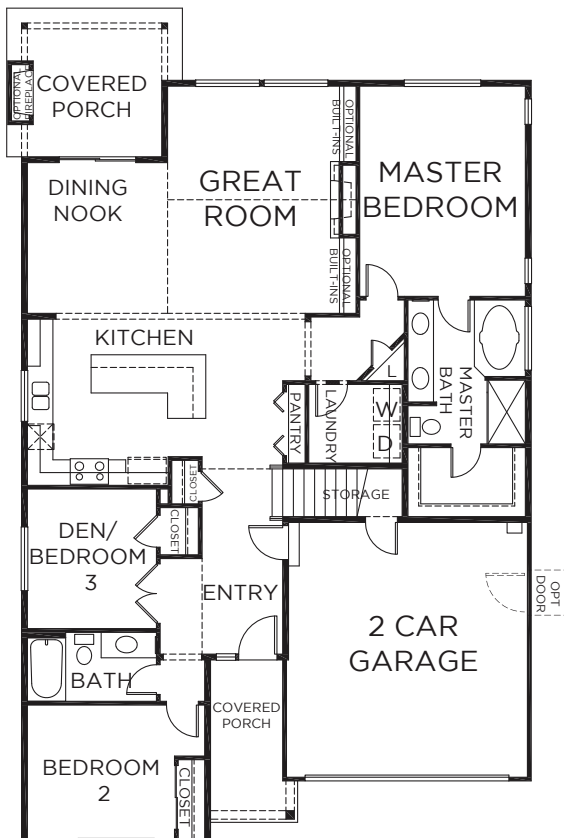


THE CAMDEN

SQUARE FOOTAGE: 2,470
BEDROOMS: 3
BATHS: 2 or 3
GARAGE: 2

DESIGN HIGHLIGHTS:

GREAT ROOM, COVERED PORCH,
DEN/OR BEDROOM, MASTER SUITE
WITH WALK-IN-CLOSET



*This is a general representation of our plan and may vary from actual home constructed. Features, elevation, materials, dimensions and layout all subject to change. 6/14