

THE TETON

SQUARE FOOTAGE: 2,978

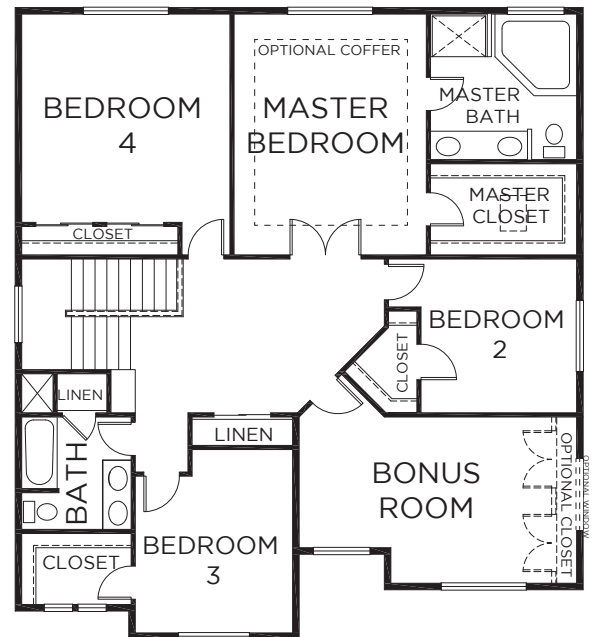
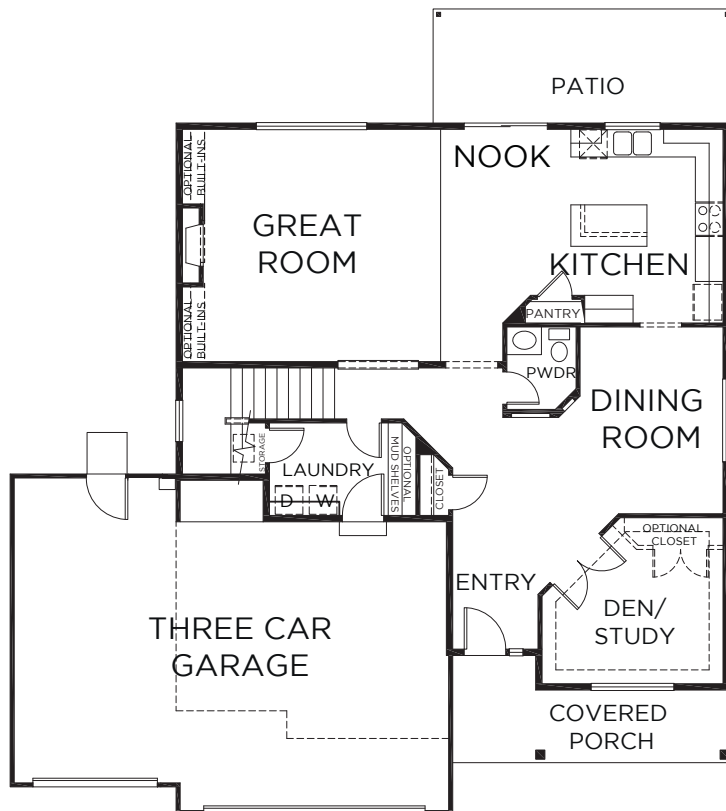
BEDROOMS: 4

BATHS: 2.5

GARAGE: 3

DESIGN HIGHLIGHTS:

SPACIOUS ENTRY, FORMAL DINING ROOM, GREAT ROOM, DEN/STUDY ON MAIN, 5TH BEDROOM OR BONUS ROOM UPSTAIRS



*This is a general representation of floor plan and may vary from actual home constructed. Features, elevation, materials, dimensions and layout all subject to change. 6/14