

THE CARTWRIGHT

SQUARE FOOTAGE: 3,835

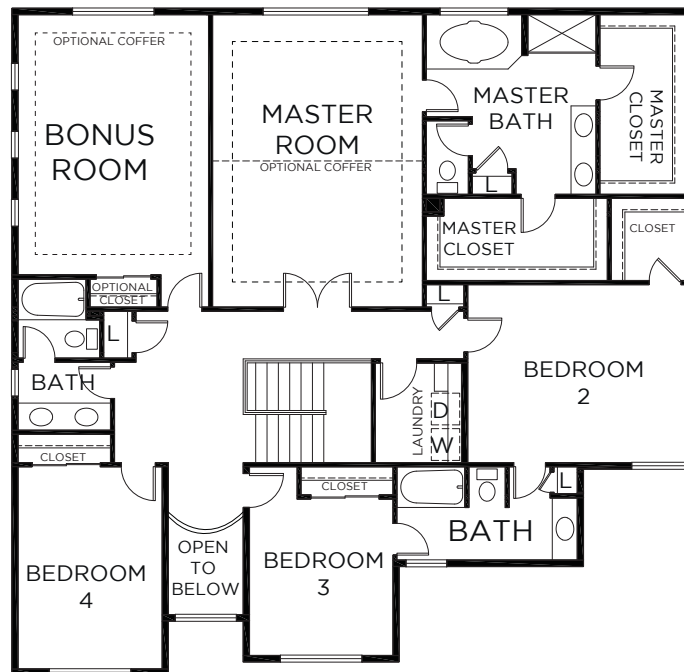
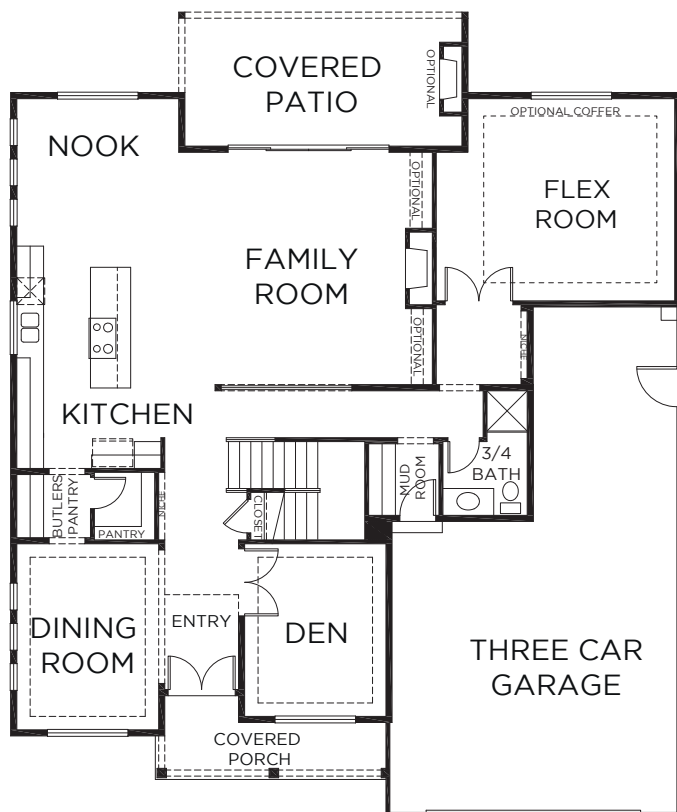
BEDROOMS: 4

BATHS: 3.75

GARAGE: 3

DESIGN HIGHLIGHTS:

VAULTED ENTRY, DEN, GUEST ROOM ON THE MAIN, GREAT ROOM, 3/4 BATH ON THE MAIN, MASTER SUITE, FORMAL DINING ROOM



*This is a general representation of floor plan and may vary from actual home constructed. Features, elevation, materials, dimensions and layout all subject to change. 6/14