

THE NIVA

SQUARE FOOTAGE: 5,102

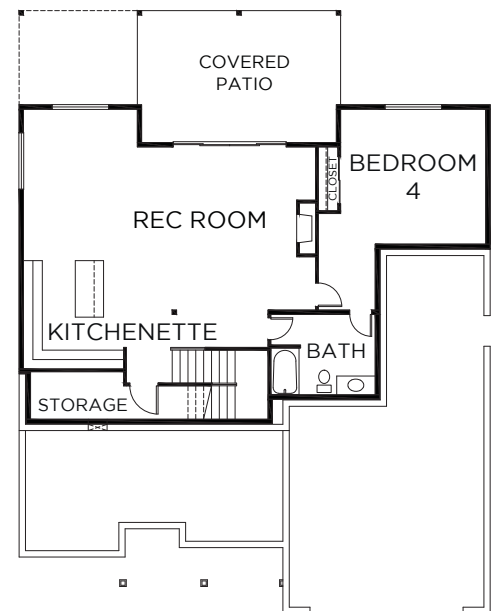
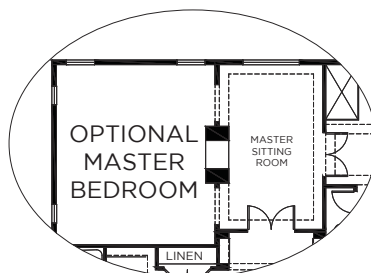
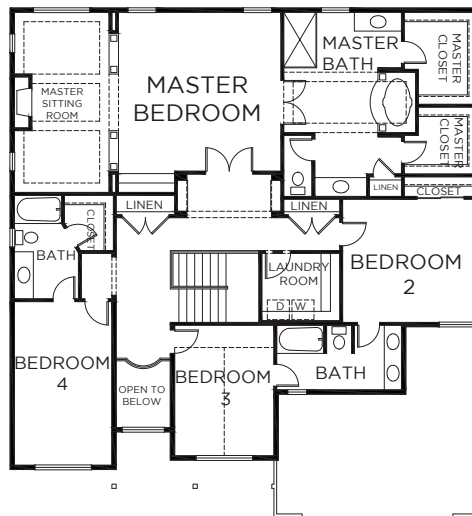
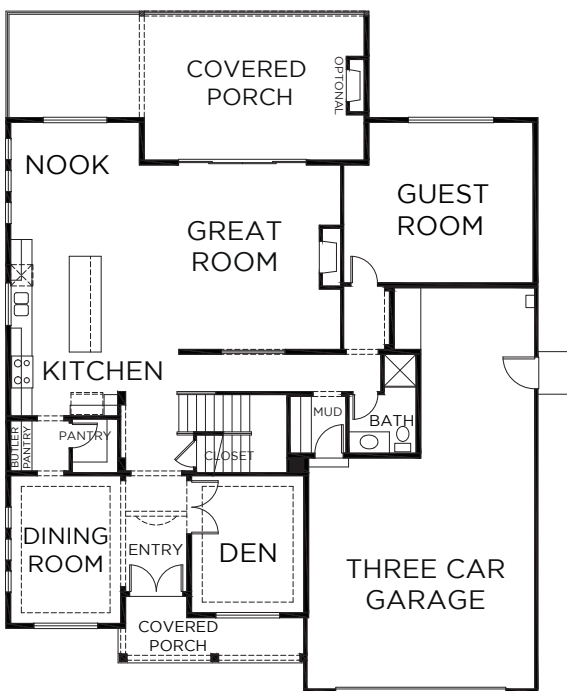
BEDROOMS: 4 or 5

BATHS: 2.5

GARAGE: 3

DESIGN HIGHLIGHTS:

COVERED PORCH, GREAT ROOM,
MASTER BEDROOM WITH SITTING
ROOM, BASEMENT, DEN, STORAGE,
UPSTAIRS LAUNDRY



*This is a general representation of floor plan and may vary from actual home constructed. Features, elevation, materials, dimensions and layout all subject to change. 6/14

