

THE STERLING

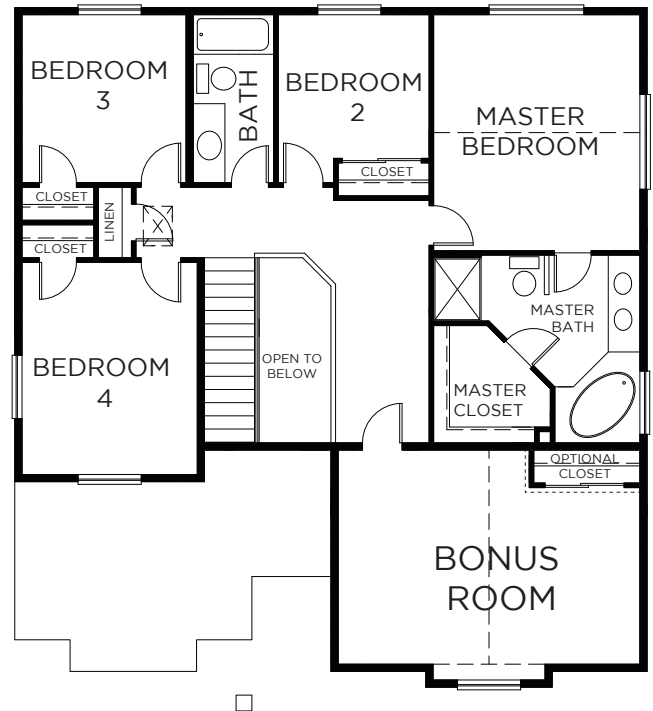
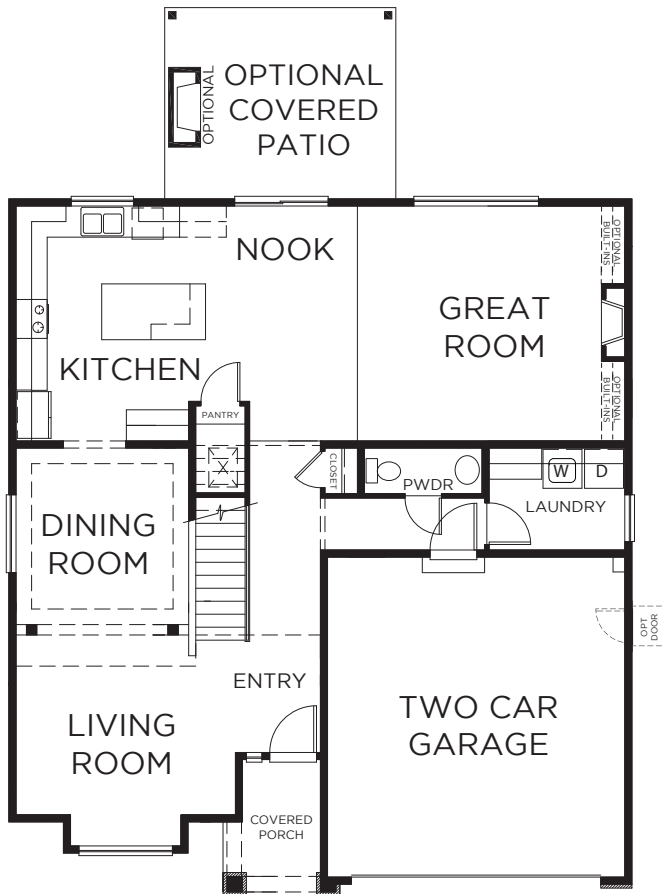
SQUARE FOOTAGE: 2,603

BEDROOMS: 4

BATHS: 2.5

DESIGN HIGHLIGHTS:

FORMAL LIVING, DINING AND KITCHEN
OPEN TO GREAT ROOM ON MAIN.
HUGE SECOND FLOOR BONUS ROOM.



*This is a general representation of floor plan and may vary from actual home constructed. Features, elevation, materials, dimensions and layout all subject to change. 6/14