

THE CRISTINA

SQUARE FOOTAGE: 2,622

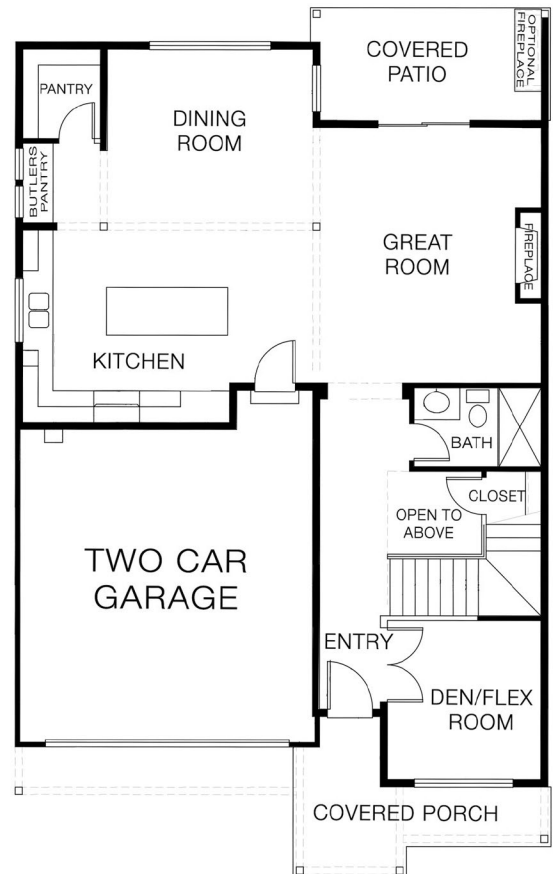
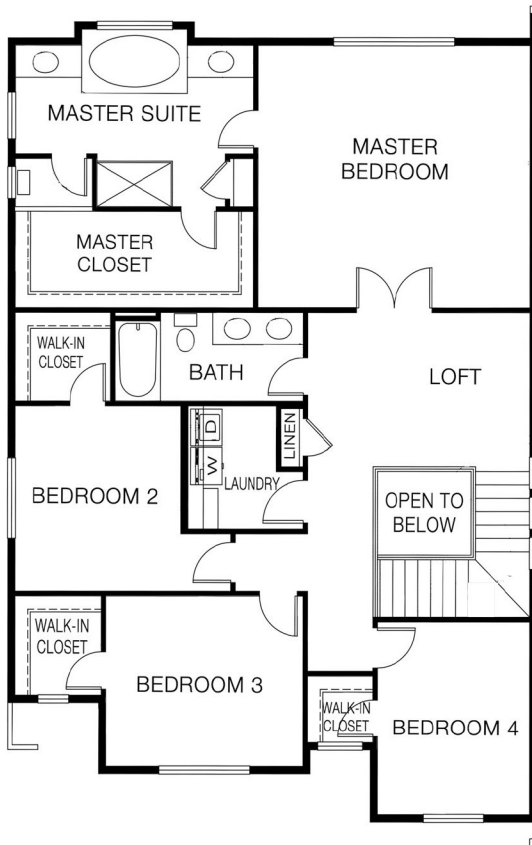
BEDROOMS: 4

BATHS: 3

GARAGE: 2

DESIGN HIGHLIGHTS:

OPEN CONCEPT DOWNSTAIRS, FULL BATH DOWN WITH DEN/FLEX ROOM, LARGE MASTER SUITE, WALK IN CLOSETS IN ALL BEDROOMS



*This is a general representation of floor plan and may vary from actual home constructed. Features, elevation, materials, dimensions and layout all subject to change. 07/2017