

## THE JOSHUA

SQUARE FOOTAGE: 2,455

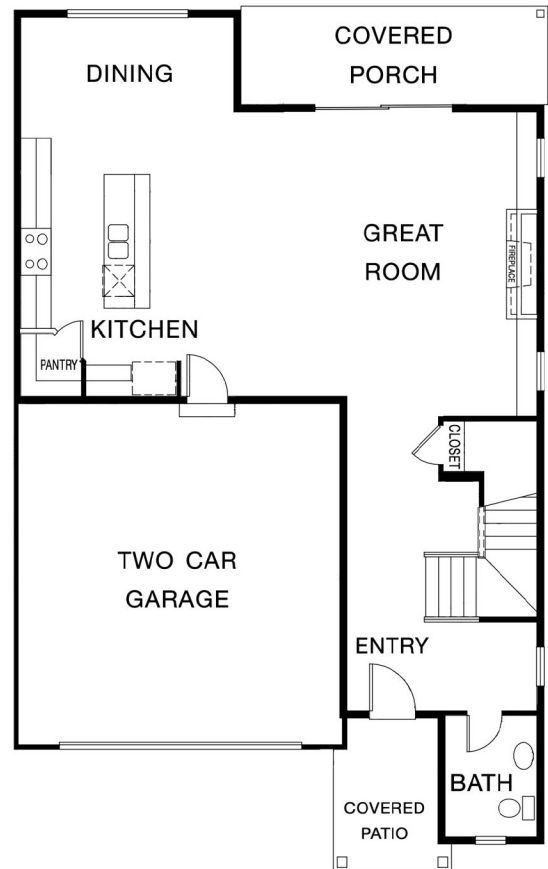
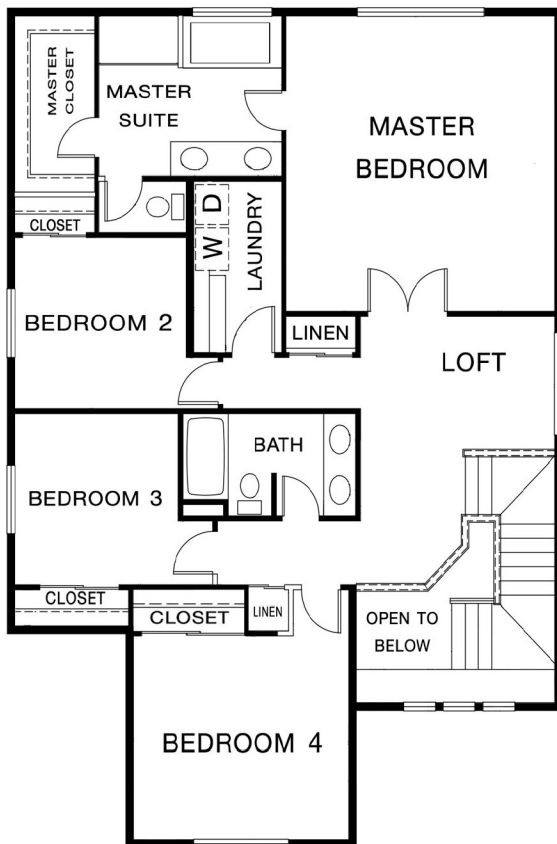
BEDROOMS: 4

BATHS: 2.5

GARAGE: 2

### DESIGN HIGHLIGHTS:

OPEN CONCEPT DOWNSTAIRS LIVING AREAS, LOFT, AMPLE STORAGE, SPACIOUS MASTER BATH SUITE, LARGE COVERED PATIO IN BACK



\*This is a general representation of floor plan and may vary from actual home constructed. Features, elevation, materials, dimensions and layout all subject to change. 07/2017