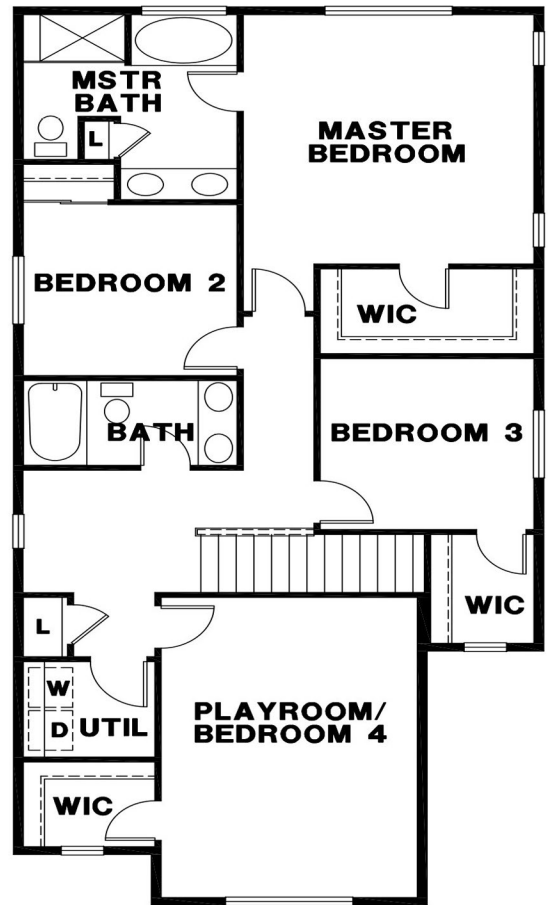
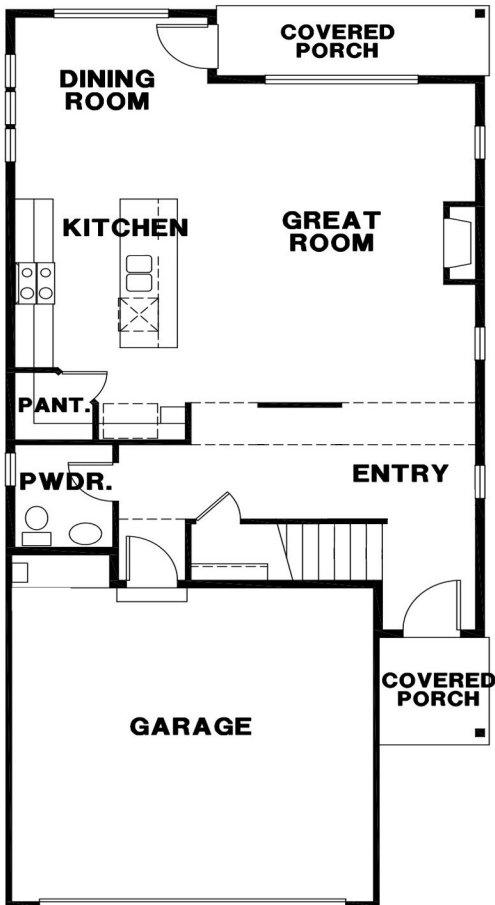


THE ASHFORD

SQUARE FOOTAGE: 2,048
 BEDROOMS: 4
 BATHS: 2.5
 GARAGE: 2

DESIGN HIGHLIGHTS:

OPEN CONCEPT DOWNSTAIRS LIVING AREAS, COVERED PORCH, LARGE BONUS ROOM OR 4TH BEDROOM UPSTAIRS



*This is a general representation of floor plan and may vary from actual home constructed. Features, elevation, materials, dimensions and layout all subject to change. 06/2018