

THE CORONADO

3,134 SQUARE FOOT, 2 STORY HOME



at
Chinook Meadows

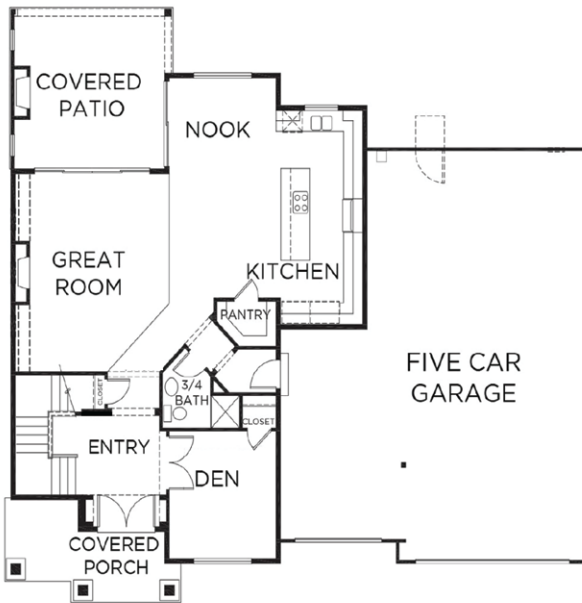
MODEL HOME
23107 70th St. E.
Buckley, WA 98321
www.soundbuilthomes.com



4-5 BEDS/2.75 BATHS



THE CORONADO PLAN IS ONE OF THE MOST POPULAR PLANS OFFERED BY SOUNDBUILT HOMES. IT FEATURES A DEN AND 3/4 BATH ON THE MAIN FLOOR, AMPLE OUTDOOR LIVING SPACE, AND A 5 CAR GARAGE. THE UPSTAIRS LIVING AREAS OF THIS HOME ARE HIGHLIGHTED BY A MASTER SUITE THAT WILL BE DESIRED BY MANY AND A LARGE BONUS ROOM WITH VAULTED CEILINGS.



* OUTDOOR FIREPLACES ARE AN OPTIONAL UPGRADE ONLY



COMMUNITY FEATURES

- Large Lot Sizes
- Mt. Rainier Views
- Rambler Plans
- Contemporary Design

WWW.SOUNDBUILTHOMES.COM

Headquartered and centrally located in the South Puget Sound, Soundbuilt Homes has built new home communities in King, Pierce and Thurston Counties for nearly four decades. We truly are Washington's expert home builder.

*All pricing, plans, and details of this flyer strictly pertain to Elk Run at Chinook Meadows and are subject to change. 10/1/2018



www.presgroupnewhomesWA.com
253-256-5435