

THE EMILEE

2,620 SQUARE FOOT, SINGLE STORY RAMBLER



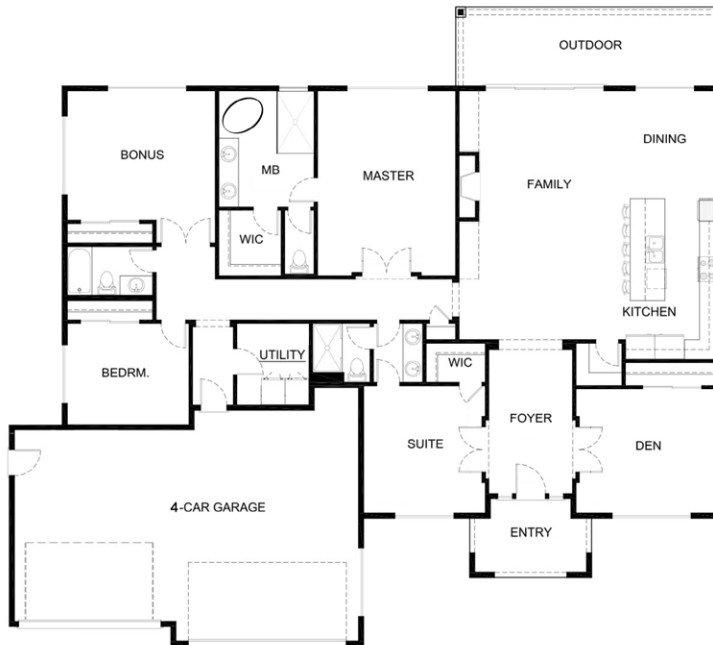
MODEL HOME
23107 70th St. E.
Buckley, WA 98321
www.soundbuilthomes.com



3-5 BEDS/2.75 BATHS



THE EMILEE PLAN IS ONE OF SOUNDBUILT HOMES' NEWEST RAMBLER PLANS. THE 2,600 FEET OF LIVING SPACE AND A 3 CAR GARAGE ARE JUST THE SURFACE OF WHAT THIS PLAN HAS TO OFFER. WITH A MINI-SUITE, DEN, 2 ADDITIONAL BEDROOMS OR BONUS ROOM, FULL MASTER SUITE AND SPACIOUS OUTDOOR LIVING AREAS, YOU WON'T WANT TO MISS OUT ON YOUR CHANCE TO GRAB THIS PLAN.



* OUTDOOR FIREPLACES ARE AN OPTIONAL UPGRADE ONLY

COMMUNITY FEATURES

- Large Lot Sizes
- Mt. Rainier Views
- Rambler Plans
- Contemporary Design

WWW.SOUNDBUILTHOMES.COM

Headquartered and centrally located in the South Puget Sound, Soundbuilt Homes has built new home communities in King, Pierce and Thurston Counties for nearly four decades. We truly are Washington's expert home builder.

*All pricing, plans, and details of this flyer strictly pertain to Elk Run at Chinook Meadows and are subject to change. 10/1/2018

presgroup
REALTY

www.presgroupnewhomesWA.com
253-256-5435