

ELK RUN AT CHINOOK MEADOWS

# THE LIAM

3,086 SQUARE FOOT, TWO STORY HOME



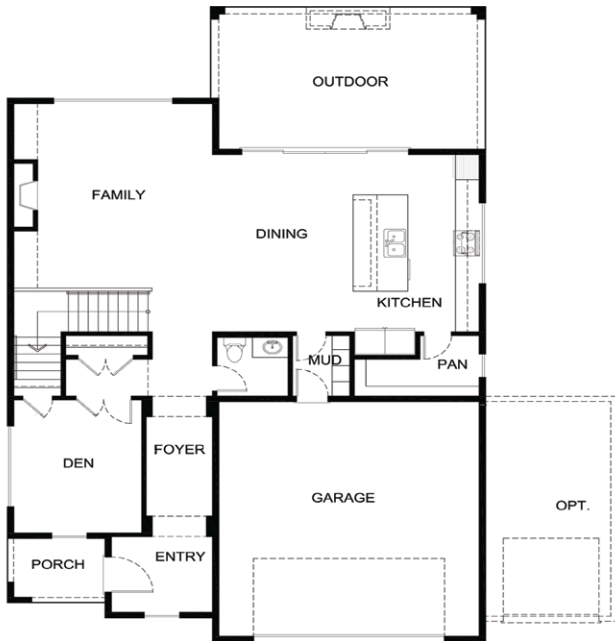
**MODEL HOME**  
23107 70th St. E.  
Buckley, WA 98321  
[www.soundbuilthomes.com](http://www.soundbuilthomes.com)



**4 BEDS/2.5 BATHS**



THE LIAM PLAN--THE PERFECT FLOOR PLAN FOR THOSE WHO TRULY WANT AN EFFICIENT HOME. THIS PLAN HAS A DEN/OFFICE, LARGE FAMILY ROOM, DINING AREA, ROOMY PANTRY AND A LARGE OUTDOOR LIVING AREA ON THE MAIN FLOOR. UPSTAIRS YOU'LL FIND A LARGE LOFT/LEISURE AREA WITH A PRIVATE DECK AS WELL AS 3 ADDITIONAL BEDROOMS AND A SPACIOUS MASTER SUITE WITH TWO WALK IN CLOSETS OFF THE MASTER BATHROOM



\* OUTDOOR FIREPLACES ARE AN OPTIONAL UPGRADE ONLY



## COMMUNITY FEATURES

- Large Lot Sizes
- Mt. Rainier Views
- Rambler Plans
- Contemporary Design

[WWW.SOUNDBUILTHOMES.COM](http://WWW.SOUNDBUILTHOMES.COM)

Headquartered and centrally located in the South Puget Sound, Soundbuilt Homes has built new home communities in King, Pierce and Thurston Counties for nearly four decades. We truly are Washington's expert home builder.

\*All pricing, plans, and details of this flyer strictly pertain to Elk Run at Chinook Meadows and are subject to change. 10/1/2018



[www.presgroupnewhomesWA.com](http://www.presgroupnewhomesWA.com)  
253-256-5435