

## THE TETON

**SQUARE FOOTAGE:** 3,031

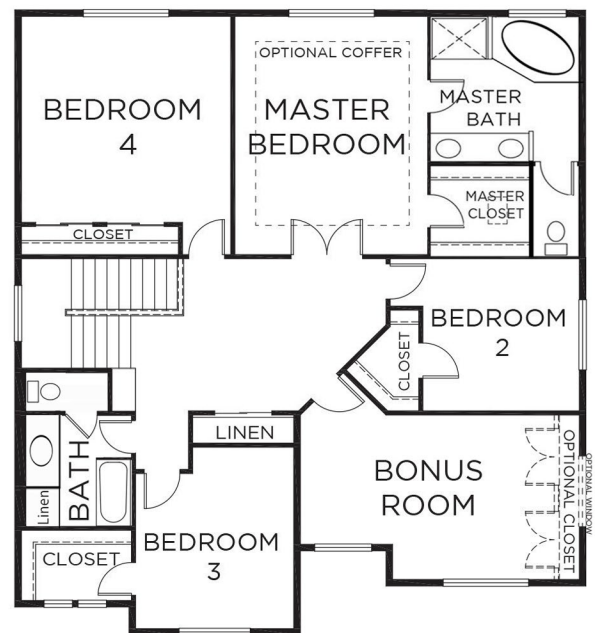
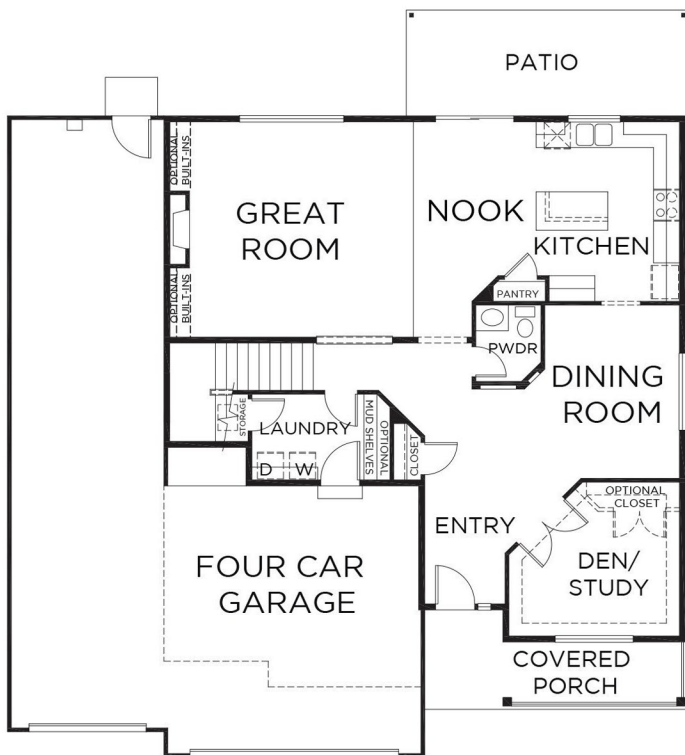
**BEDROOMS:** 4

**BATHS:** 2.5

**GARAGE:** 4

### DESIGN HIGHLIGHTS:

SPACIOUS ENTRY, FORMAL DINING ROOM, GREAT ROOM, DEN/STUDY ON MAIN, 5TH BEDROOM OR BONUS ROOM UPSTAIRS



\*This is a general representation of floor plan and may vary from actual home constructed. Features, elevation, materials, dimensions and layout all subject to change. 2/20/2019