

27006 13TH AVE S DES MOINES, WA

THE LIAM

3,086 SQUARE FOOT, TWO STORY HOME



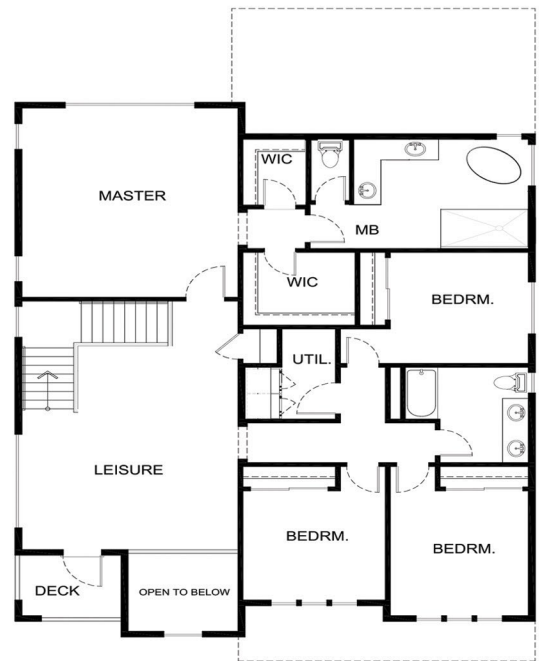
4 BEDS/2.5 BATHS



THE LIAM PLAN--THE PERFECT FLOOR PLAN FOR THOSE WHO TRULY WANT AN EFFICIENT HOME. THIS PLAN HAS A DEN/OFFICE, LARGE FAMILY ROOM, DINING AREA, ROOMY PANTRY AND A LARGE OUTDOOR LIVING AREA ON THE MAIN FLOOR. UPSTAIRS YOU'LL FIND A LARGE LOFT/LEISURE AREA WITH A PRIVATE DECK AS WELL AS 3 ADDITIONAL BEDROOMS AND A SPACIOUS MASTER SUITE WITH TWO WALK IN CLOSETS OFF THE MASTER BATHROOM



* OUTDOOR FIREPLACES ARE AN OPTIONAL UPGRADE ONLY



WWW.SOUNDBUILTHOMES.COM

Headquartered and centrally located in the South Puget Sound, Soundbuilt Homes has built new home communities in King, Pierce and Thurston Counties for nearly four decades. We truly are Washington's expert home builder.

*All pricing, plans and details of this flyer are subject to change. 1/1/2020