



ELK RUN AT CHINOOK MEADOWS

THE BRANTLEY

3,434 SQUARE FOOT, 1.5 STORY HOME



HOMESITE 66
6912 232nd Ave. E
Buckley, WA 98321
www.soundbuilthomes.com



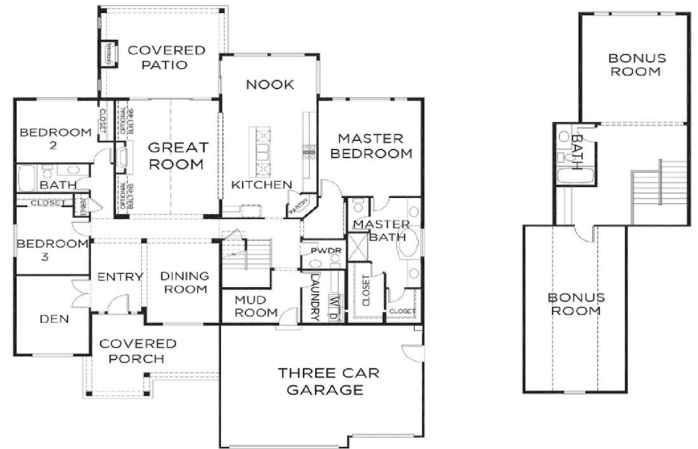
Move In Ready Special

Blinds, Washer, Dryer, Refrigerator and Fencing
ALL INCLUDED!

3 BEDS/3.5 BATHS



THE BRANTLEY IS PLAN IS ONE OF OUR MOST SOUGHT AFTER PLANS--AND FOR GOOD REASON! THIS RAMBLER STYLE PLAN HAS A MASTER SUITE ON THE MAIN, TWO MORE BEDROOMS AND A DEN. THE OPEN CONCEPT LAYOUT OF THE DINING ROOM, GREAT ROOM, NOOK AND KITCHEN ARE PERFECT FOR ENTERTAINING. LAST BUT NOT LEAST--IT FEATURES TWO LARGE BONUS ROOMS AND FULL BATHROOM ON THE 2ND FLOOR



* OUTDOOR FIREPLACES ARE AN OPTIONAL UPGRADE ONLY



WWW.SOUNDBUILTHOMES.COM

Headquartered and centrally located in the South Puget Sound, Soundbuilt Homes has built new home communities in King, Pierce and Thurston Counties for nearly four decades. We truly are Washington's expert home builder.

*All pricing, photos and details on this flyer pertain strictly to Homesite 66 in Elk Run - 6912 232nd Ave E Buckley, WA 98321



presgrouprealty.com

253-363-2450