

## THE TETON

**SQUARE FOOTAGE:** 2978

**BEDROOMS:** 4

**BATHS:** 2.5

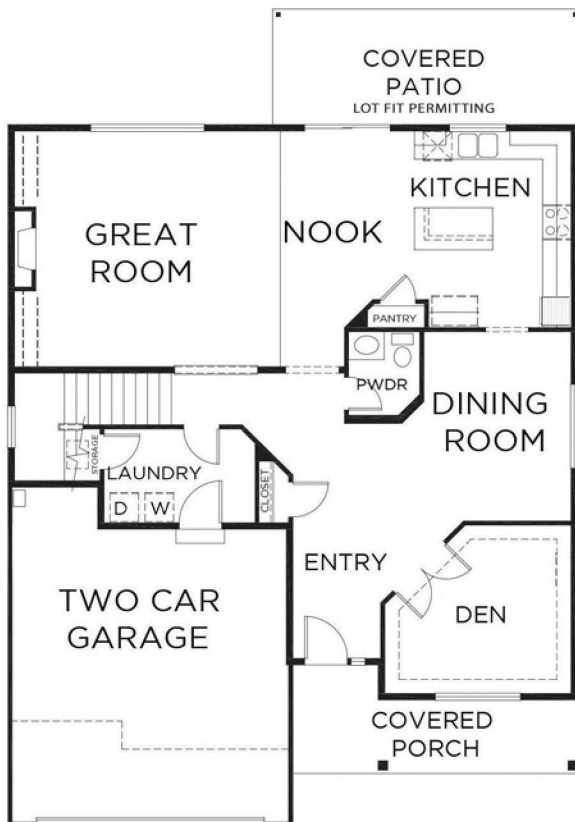
**GARAGE:** 2

### DESIGN HIGHLIGHTS:

SPACIOUS ENTRY, FORMAL DINING ROOM, GREAT ROOM, DEN/STUDY ON MAIN, 5TH BEDROOM OR BONUS ROOM UPSTAIRS



\*GARAGE AND OTHER EXTERIOR FEATURES MAY NOT BE THE STANDARD DESIGN IN YOUR COMMUNITY AND ARE SUBJECT TO CHANGE



\*THIS IS A GENERAL REPRESENTATION OF THIS FLOOR PLAN CONSTRUCTED WITH A DESIGN AND SPEC LEVEL SPECIFIC TO DES MOINES. FEATURES, ELEVATION, MATERIALS, DIMENSIONS AND LAYOUT ALL SUBJECT TO CHANGE. 12/1/2020