

THE LIAM

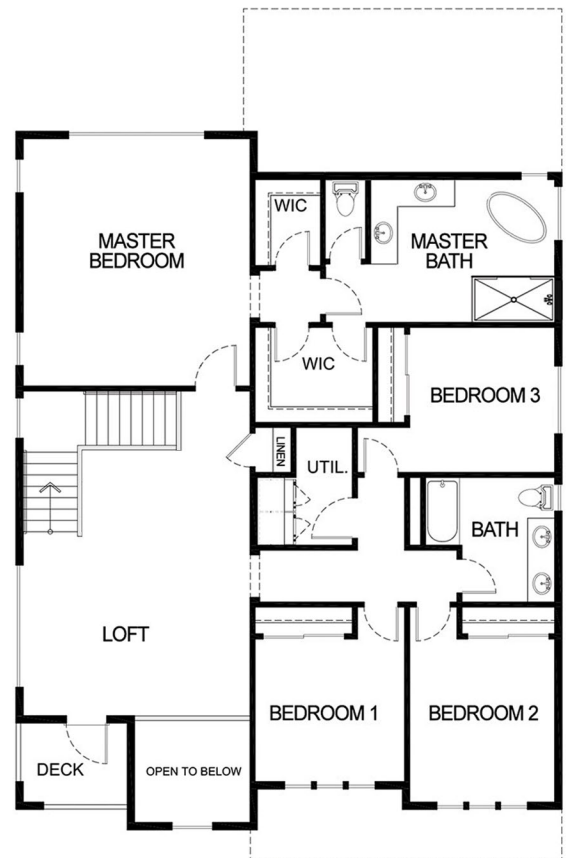
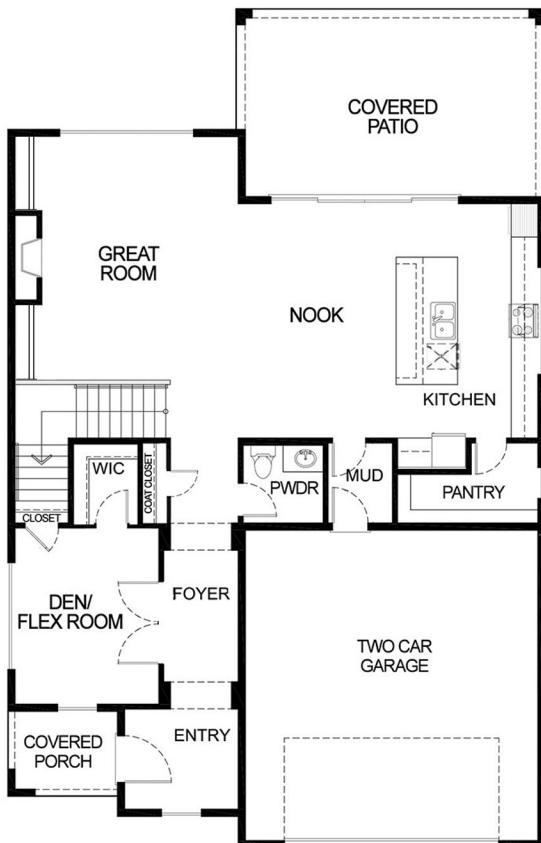
SQUARE FOOTAGE: 3,086
 BEDROOMS: 4
 BATHS: 2.5
 GARAGE: 2

DESIGN HIGHLIGHTS:

DEN ON MAIN FLOOR, LARGE
 OUTDOOR LIVING AREA, LOFT,
 SPACIOUS MASTER SUITE, 2ND
 STORY COVERED DECK AREA



*GARAGE AND OTHER EXTERIOR FEATURES MAY NOT BE STANDARD IN ALL COMMUNITIES AND ARE SUBJECT TO CHANGE



*THIS IS A GENERAL REPRESENTATION OF THIS FLOOR PLAN CONSTRUCTED WITH A DESIGN AND SPEC LEVEL SPECIFIC TO DES MOINES. FEATURES, ELEVATION, MATERIALS, DIMENSIONS AND LAYOUT ALL SUBJECT TO CHANGE. 12/1/2020