

The Hemlock

SQUARE FOOTAGE: 2,817

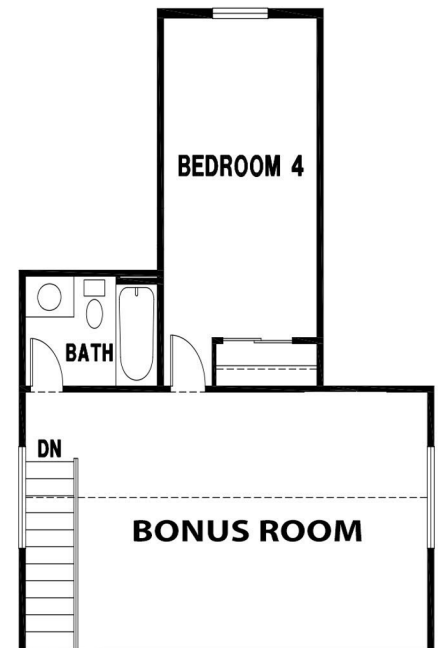
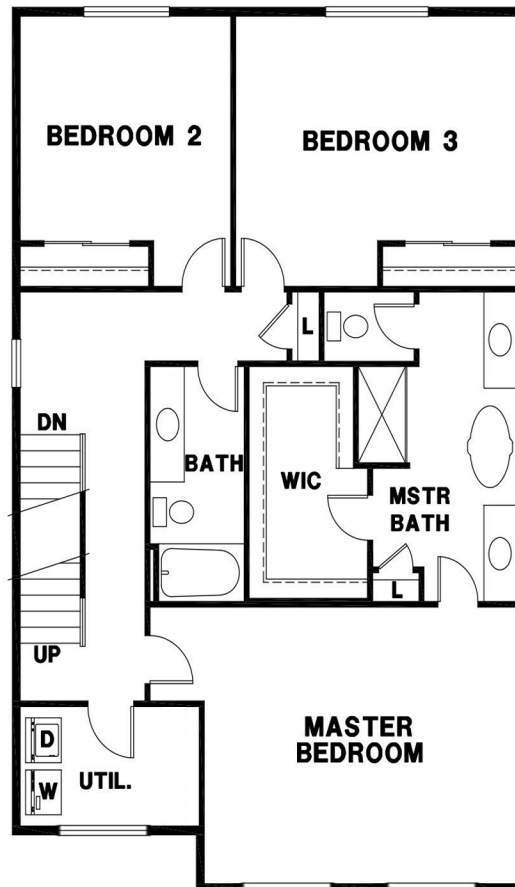
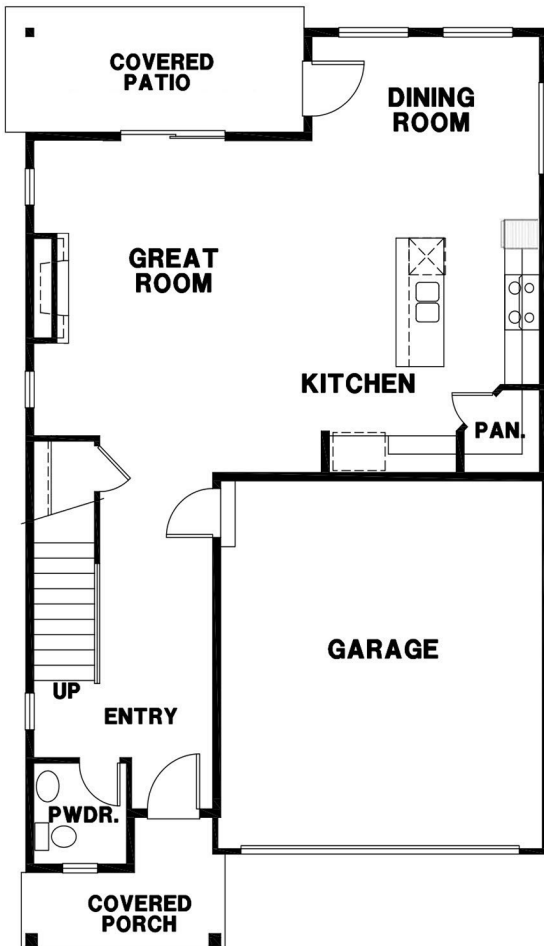
BEDROOMS: 4

BATHS: 3.5

GARAGE: 2

DESIGN HIGHLIGHTS:

3 STORY, GREAT ROOM, NOOK,
UPSTAIRS LAUNDRY, UPSTAIRS
BONUS ROOM, MASTER SUITE



*THIS IS A GENERAL REPRESENTATION OF THIS FLOOR PLAN CONSTRUCTED WITH A DESIGN AND SPEC LEVEL SPECIFIC TO BONNIES LANE/MERIDIAN BAY 2. FEATURES, ELEVATION, MATERIALS, DIMENSIONS AND LAYOUT ALL SUBJECT TO CHANGE. 12/11/2020