

THE WILLOW

SQUARE FOOTAGE: 2,853

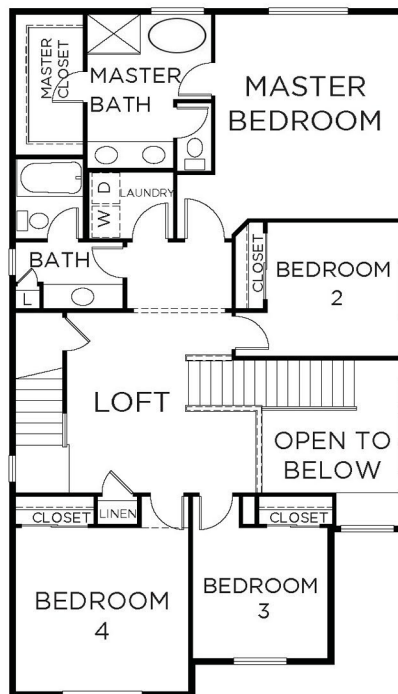
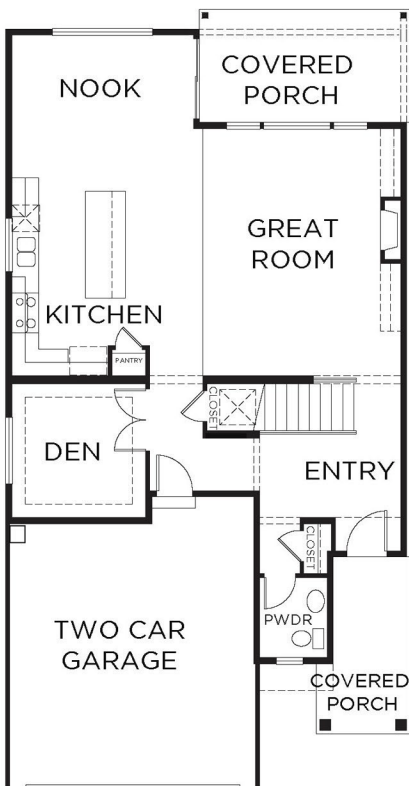
BEDROOMS: 4

BATHS: 3.5

GARAGE: 2

DESIGN HIGHLIGHTS:

2 STORY ENTRY, GREAT ROOM,
DEN/STUDY, LOFT, THIRD FLOOR
BONUS ROOM WITH BATH,
UPSTAIRS LAUNDRY



*THIS IS A GENERAL REPRESENTATION OF THIS FLOOR PLAN CONSTRUCTED WITH A DESIGN AND SPEC LEVEL SPECIFIC TO PLUM TREE. FEATURES, ELEVATION, MATERIALS, DIMENSIONS AND LAYOUT ALL SUBJECT TO CHANGE. 5/1/2021