

## THE TETON

SQUARE FOOTAGE: 3,031

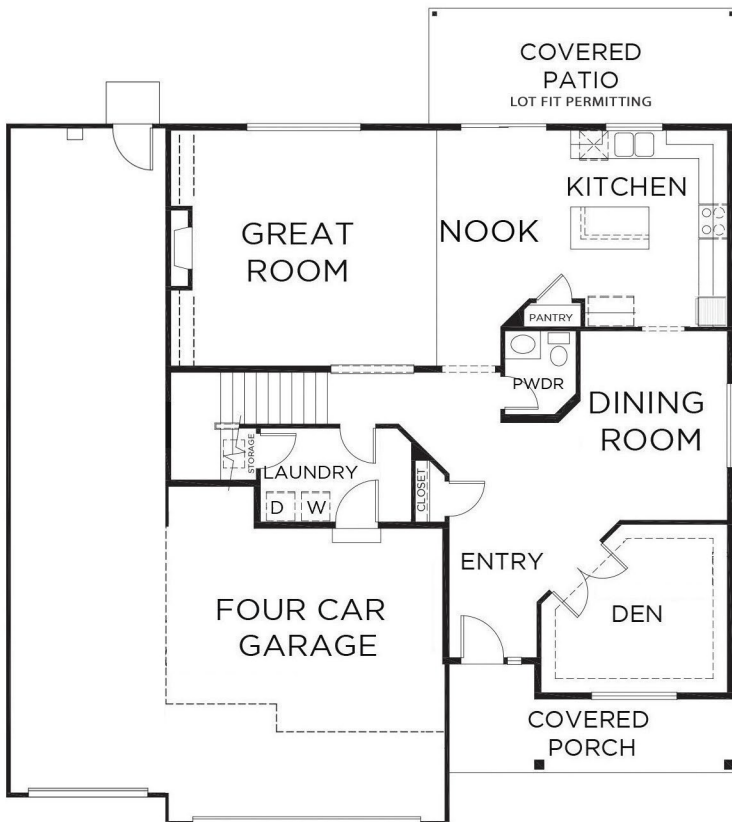
BEDROOMS: 4

BATHS: 2.5

GARAGE: 4

### DESIGN HIGHLIGHTS:

SPACIOUS ENTRY, FORMAL DINING ROOM, GREAT ROOM, DEN/STUDY ON MAIN, 5TH BEDROOM OR BONUS ROOM UPSTAIRS



\*THIS IS A GENERAL REPRESENTATION OF THIS FLOOR PLAN CONSTRUCTED WITH A DESIGN AND SPEC LEVEL SPECIFIC TO BONNIES LANE/MERIDIAN BAY 2. FEATURES, ELEVATION, MATERIALS, DIMENSIONS AND LAYOUT ALL SUBJECT TO CHANGE. 12/1/2020