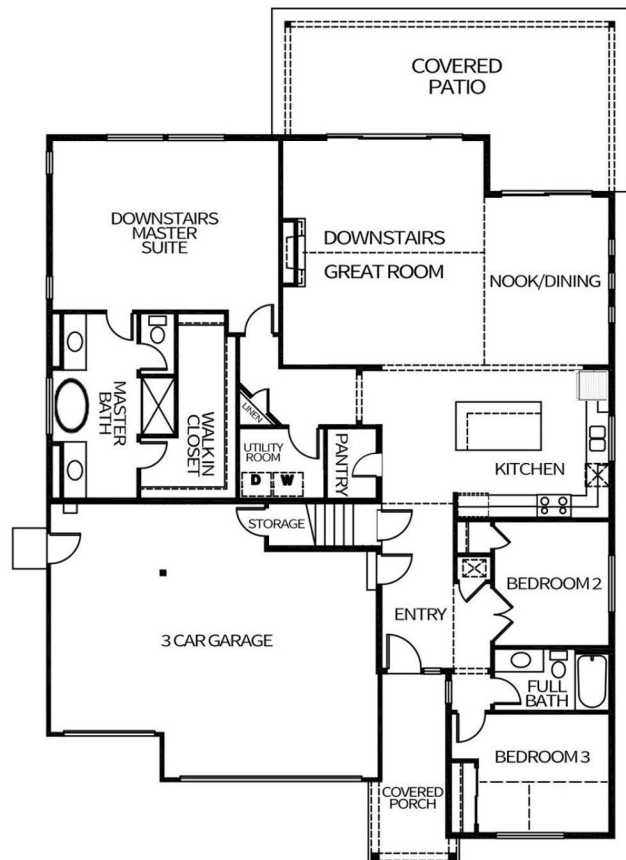
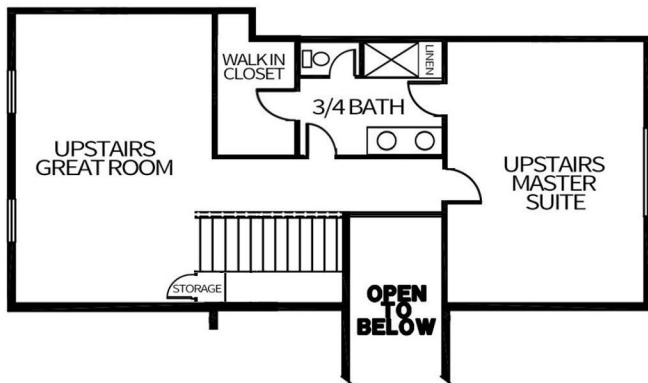


THE AINSWORTH MULTI-GEN

SQUARE FOOTAGE: 2,992
 BEDROOMS: 4
 BATHS: 3
 GARAGE: 3

DESIGN HIGHLIGHTS:

DONWSTAIRS AND UPSTAIRS MASTER SUITES AND LIVING AREAS FOR MULTI-GEN LIVING, LARGE OUTDOOR COVERED PATIO



*THIS IS A GENERAL REPRESENTATION OF THIS FLOOR PLAN CONSTRUCTED WITH A DESIGN AND SPEC LEVEL SPECIFIC TO BONNIES LANE/MERIDIAN BAY 2. FEATURES, ELEVATION, MATERIALS, DIMENSIONS AND LAYOUT ALL SUBJECT TO CHANGE. 12/1/2020