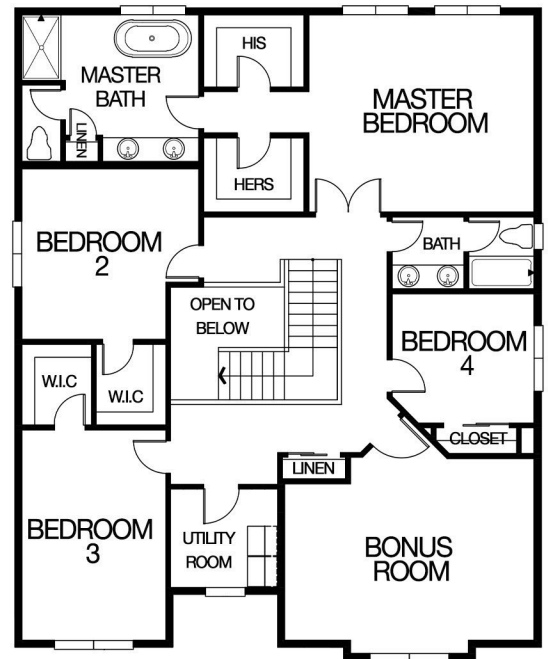
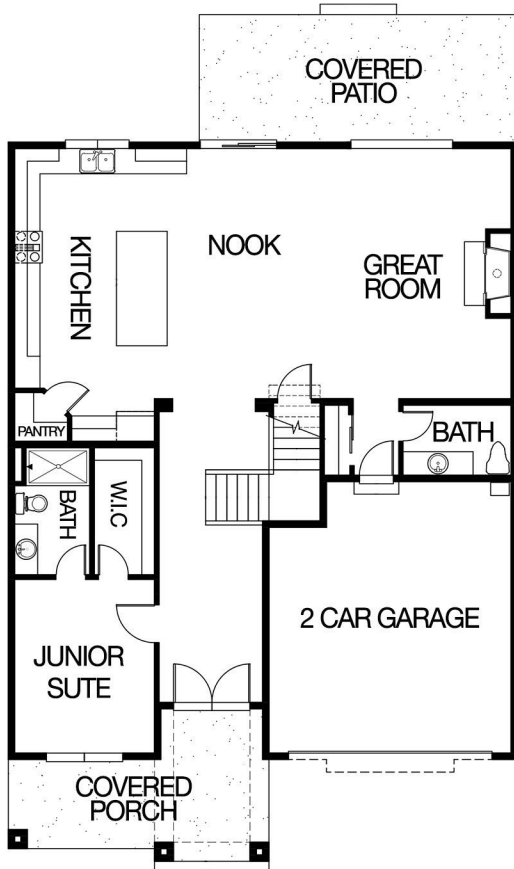


THE BALLARD

SQUARE FOOTAGE: 3,301
 BEDROOMS: 5
 BATHS: 3.5
 GARAGE: 2

DESIGN HIGHLIGHTS:

GUEST SUITE DOWN WITH FULL BATH,
 LARGE GREAT ROOM, COVERED DECK
 LARGE BONUS ROOM UPSTAIRS



*THIS IS A GENERAL REPRESENTATION OF THIS FLOOR PLAN CONSTRUCTED WITH A DESIGN AND SPEC LEVEL SPECIFIC TO BONNIES LANE/MERIDIAN BAY 2. FEATURES, ELEVATION, MATERIALS, DIMENSIONS AND LAYOUT ALL SUBJECT TO CHANGE. 12/1/2020